



INSTALLING YOUR POCKET POLLINATOR GARDEN



Metro Blooms

**DESIGN
+BUILD**



Metro Blooms

Metro Blooms is a 501(c)(3) nonprofit organization that partners with communities to create resilient landscapes and foster clean watersheds, embracing the values of equity and inclusion to solve environmental challenges.



Metro Blooms DESIGN+BUILD

Our technical expertise resides in Metro Blooms Design+Build, a for-profit entity owned by and wholly supporting the mission of Metro Blooms.

Design+Build provides design, install and maintenance services for Metro Blooms programs, projects and other clients.

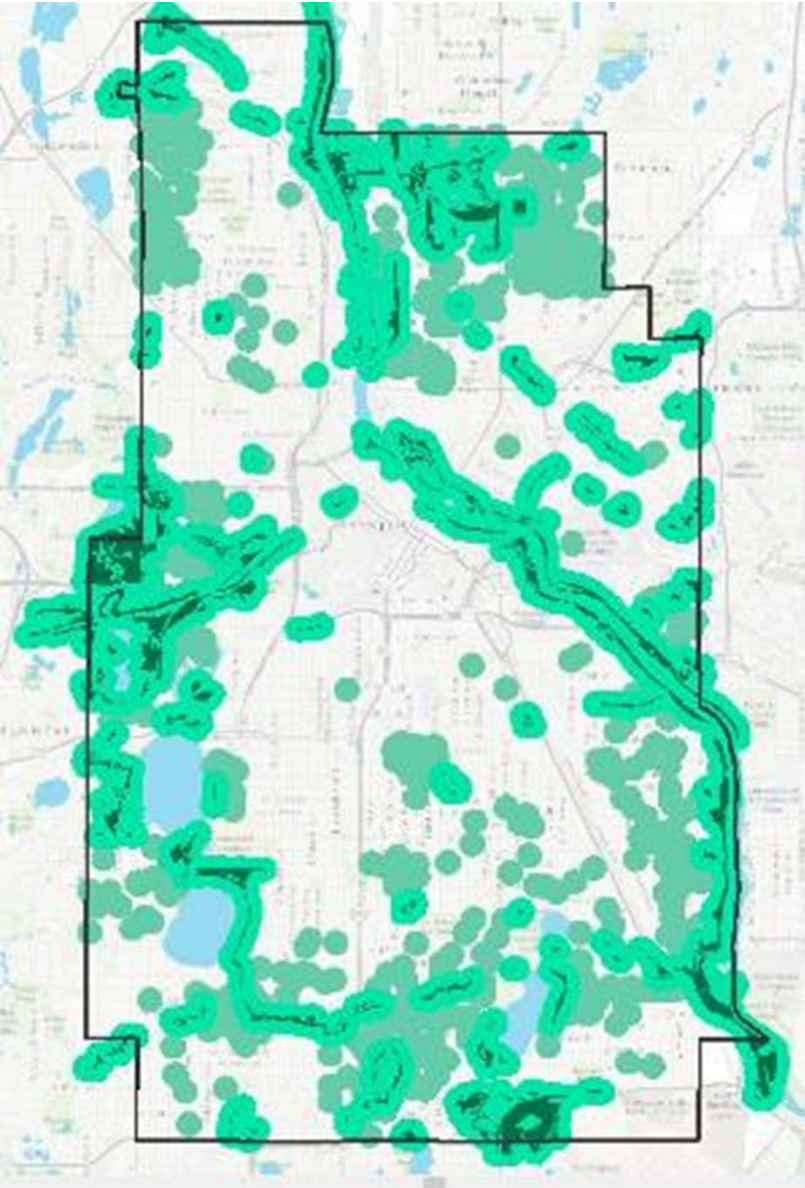


Visit www.metroblooms.org for more information!



Why Pollinator Gardens are Important

- Wildlife and plants that are native to Minnesota have evolved together over time
- Native plants are uniquely positioned to provide the right nutrition for wildlife
- Planting new native plants is a great way to create pollinator habitat and....
- How we manage and maintain our landscapes also impacts pollinators



DESIGNING NATIVE PLANTINGS IN URBAN AREAS



Protection from pesticides

- Sourcing plants from nurseries that do not use pesticides

Clean water sources

Food resources through the season

- Staggered bloom times

Nesting sites

- Ground-nesting pollinators
- Some native insects overwinter in standing dead vegetation

A network of habitat and protected refuge areas

- Pollinators travel from patch to patch

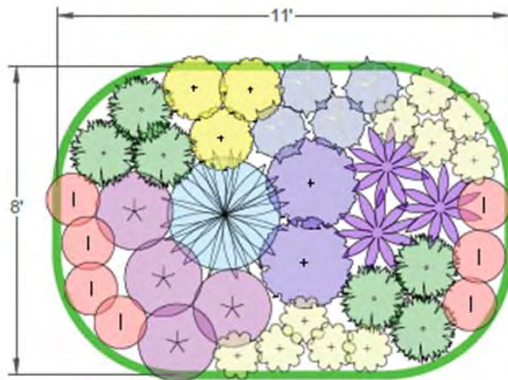


POCKET PLANTINGS TEMPLATES



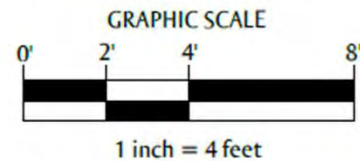
NATIVE FULL SUN GARDEN – 75 SQUARE FEET

PLANTING PLAN



PLANT LIST

ICON	QTY	COMMON NAME	SCIENTIFIC NAME	HT	SPACING	BLOOM
	7	Prairie Smoke	Geum triflorum	8"	1'	April-May
	10	Prairie Coreopsis	Coreopsis palmata	1'-2'	1'	June-Aug
	6	Sweetgrass	Hierochloe odorata	2'	18"	May-July
	3	Golden Alexanders	Zizia aurea	3'	18"	April-June
	4	Sky Blue Aster	Symphotrichum oolentangiense	3'	18"	Aug-Oct
	4	Swamp Milkweed	Asclepias incarnata	4'	2'	July-Aug
	3	Purple Coneflower	Echinacea purpurea	2'-5'	2.5'	June-Aug
	1	Blue Wild Indigo	Baptisia australis	3'-4'	3'	May-June
	2	Purple Giant Hyssop	Agastache scrophylariifolia	4'-6'	1'	July - Oct



PLANTING NOTES

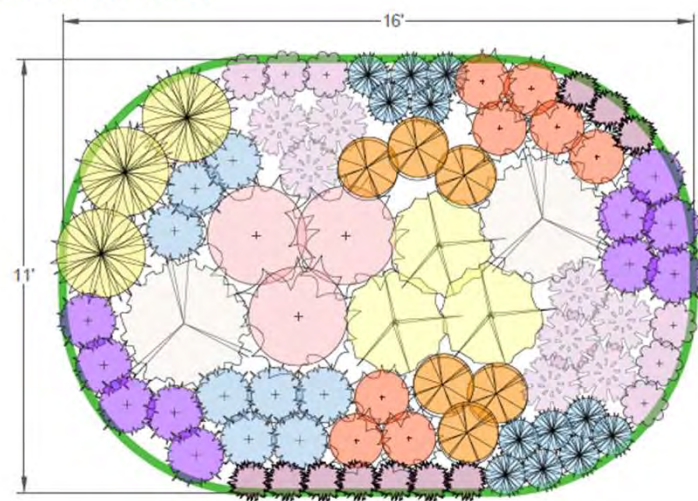
- If your raingarden is a different shape than shown on this plan, that's ok. These notes will help you place the plants in the right spots.
- Keep plants within the dashed line of the basin in that area as they are best suited for the soil moisture conditions.
- Consider where you will view the garden from when placing plants.
- Plant in clusters or groups of 3 or more.
- Put shorter plants near the outer edge.
- Put taller plants near the back or center.
- Use the plant list as a guide for heights. It is organized from shortest to tallest plants.
- Have fun. Don't stress. Enjoy your new garden and pollinator guests!

PLANT PHOTOS



NATIVE FULL SUN GARDEN – 150 SQUARE FEET

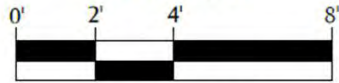
PLANTING PLAN



PLANT LIST

ICON	QTY	COMMON NAME	SCIENTIFIC NAME	HT	SPACING	BLOOM
	6	Pink Pussytoes	Antennaria dioica rubra	6"	1'	Apr-June
	10	Prairie Smoke	Geum triflorum	6"-1'	1'	May-July
	12	Wild Lupine	Lupinus perennis	1'-2'	1'	May-July
	8	Butterfly Weed	Asclepias tuberosa	1'-2.5'	18"	June-Aug
	3	Cream False Indigo	Baptisia bracteata	2'-2.5'	2'	May-June
	10	Purple Prairie Clover	Dalea purpurea	1'-3'	18"	July-Sept
	6	Black-eyed Susan	Rudbeckia hirta	1'-3'	18"	June-Oct
	8	Rough Blazing Star	Liatris aspera	2'-3'	18"	July-Oct
	8	Little Bluestem	Schizachyrium scoparium	2'-4'	18"	Aug-Sept
	2	New Jersey Tea	Ceanothus americanus	3'-4'	3'	June-Aug
	3	Showy Goldenrod	Solidago speciosa	3'-5'	2'	Aug-Oct
	3	Sweet Joe Pye Weed	Eupatorium pupureum	4'-7'	2'	July-Sept

GRAPHIC SCALE



1 inch = 4 feet

PLANTING NOTES

- If your native garden is a different shape than shown on this plan, that's ok. These notes will help you place the plants in the right spots.
- Consider where you will view the garden from when placing plants.
- Plant in clusters or groups of 3 or more.
- Put shorter plants near the outer edge.
- Put taller plants near the back or center.
- Use the plant list as a guide for heights. It is organized from shortest to tallest plants.
- Have fun. Don't stress. Enjoy your new garden and pollinator guests!

PLANT PHOTOS



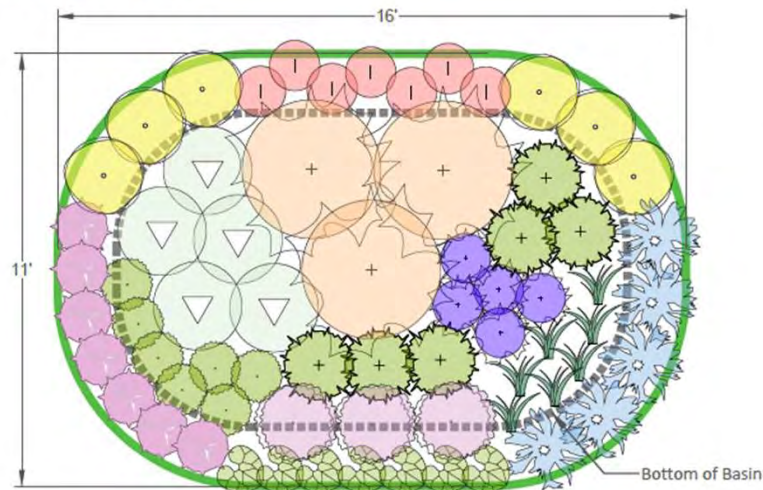
POCKET PLANTINGS

*in shade and in
raingardens*



NATIVE SHADE GARDEN – 150 SF

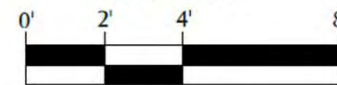
PLANTING PLAN



PLANT LIST

ICON	QTY	COMMON NAME	SCIENTIFIC NAME	HT	SPACING	BLOOM
	7	Wild Ginger	<i>Asarum canadense</i>	6"	1'	Apr-May
	7	Wild Geranium	<i>Geranium maculatum</i>	1'-2'	1'	May-June
	7	Maidenhair Fern	<i>Adiantum pedatum</i>	1'-2'	18"	n/a
	5	Big-Leaved Aster	<i>Aster macrophyllus</i>	1'-2'	18"	Aug-Sept
	3	Bradbury's Monarda	<i>Monarda bradburiana</i>	1'-2'	18"	June-July
	6	Zig Zag Goldenrod	<i>Solidago flexicaulis</i>	1'-3'	18"	Aug-Oct
	7	Solomon's Seal	<i>Polygonatum biflorum</i>	1'-3'	1'	Apr-May
	7	Columbine	<i>Aquilegia canadensis</i>	2'-3'	1'	May-July
	6	Palm Sedge	<i>Carex muskingumensis</i>	2'-3'	18"	June-Sept
	5	White Turtlehead	<i>Chelone glabra</i>	2'-3'	2'	Aug-Oct
	5	Great Blue Lobelia	<i>Lobelia siphilitica</i>	2'-3'	18"	July-Sept
	3	Culver's Root	<i>Veronicastrum virginicum</i>	3'-5'	2'	July-Sept

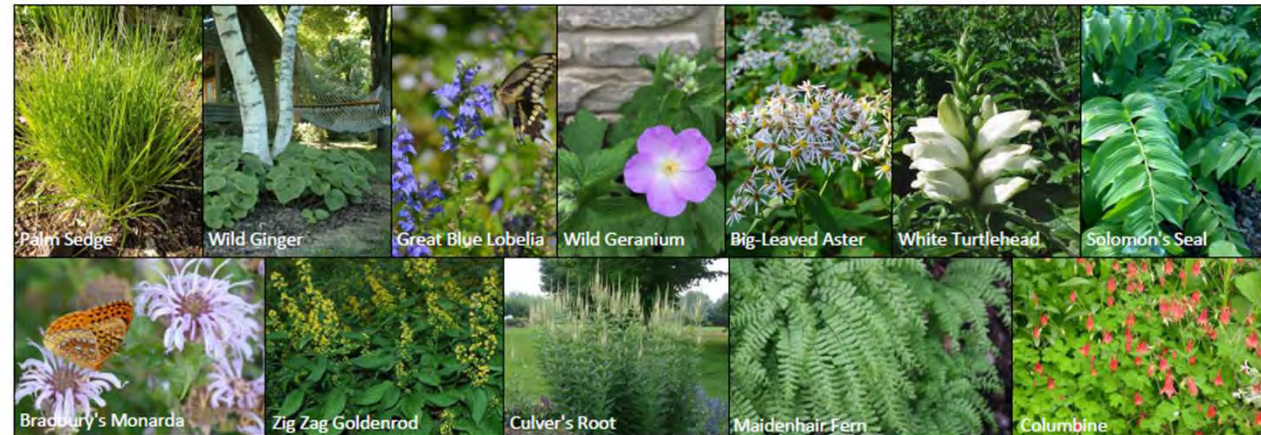
GRAPHIC SCALE



PLANTING NOTES

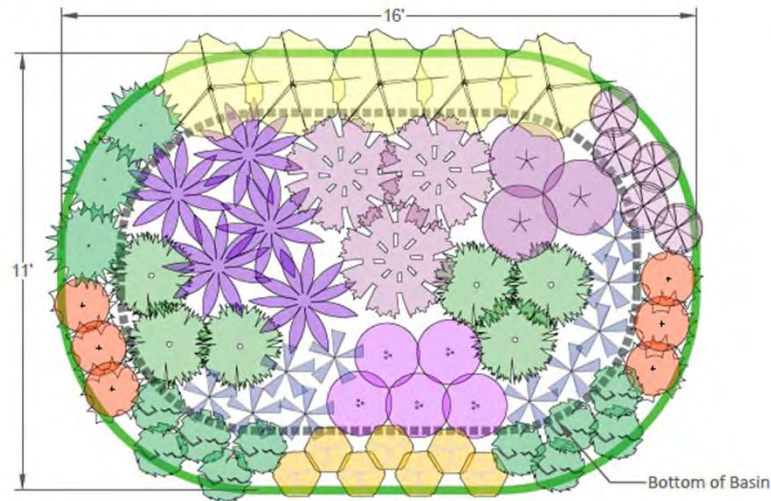
- If your raingarden is a different shape than shown on this plan, that's ok. These notes will help you place the plants in the right spots.
- Keep plants within the dashed line of the basin in that area as they are best suited for the soil moisture conditions.
- Consider where you will view the garden from when placing plants.
- Plant in clusters or groups of 3 or more.
- Put shorter plants near the outer edge.
- Put taller plants near the back or center.
- Use the plant list as a guide for heights. It is organized from shortest to tallest plants.
- Have fun. Don't stress. Enjoy your new garden and pollinator guests!

PLANT PHOTOS



RAINGARDEN – 150 SQUARE FEET

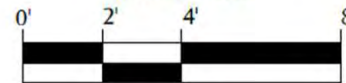
PLANTING PLAN



PLANT LIST

ICON	QTY	COMMON NAME	SCIENTIFIC NAME	HT	SPACING	BLOOM
	10	Wild Strawberry	Fragaria virginiana	9"	1'	May-Aug
	7	Lanceleaf Coreopsis	Coreopsis lanceolata	1'	1'	May-June
	6	Fox Sedge	Carex vulpinoidea	1'-2'	18"	May-June
	10	Blue Flag Iris	Iris versicolor	2'	18"	May-June
	6	Butterfly Weed	Asclepias tuberosa	1'-2.5'	18"	June-Aug
	5	Meadow Blazing Star	Liatris ligulistylis	1'-3'	18"	July-Sept
	5	Large Flowered Beardtongue	Penstemon grandiflorus	1'-3'	8"	May-June
	3	Prairie Dropseed Grass	Sporobolus heterolepis	2'-3'	2'	Aug-Oct
	5	Purple Coneflower	Echinacea purpurea	2'-5'	2.5'	June-Aug
	3	Rose Milkweed	Asclepias incarnata	4'	2'	July-Aug
	5	Showy Goldenrod	Solidago speciosa	3'-5'	2'	Aug-Oct
	3	Joe Pye Weed	Eupatorium maculatum	4'-7'	3'	July-Sept

GRAPHIC SCALE



1 inch = 4 feet

PLANTING NOTES

- If your rain garden is a different shape than shown on this plan, that's ok. These notes will help you place the plants in the right spots.
- Keep plants within the dashed line of the basin in that area as they are best suited for the soil moisture conditions.
- Consider where you will view the garden from when placing plants.
- Plant in clusters or groups of 3 or more.
- Put shorter plants near the outer edge.
- Put taller plants near the back or center.
- Use the plant list as a guide for heights. It is organized from shortest to tallest plants.
- Have fun. Don't stress. Enjoy your new garden and pollinator guests!

PLANT PHOTOS



POCKET PLANTINGS

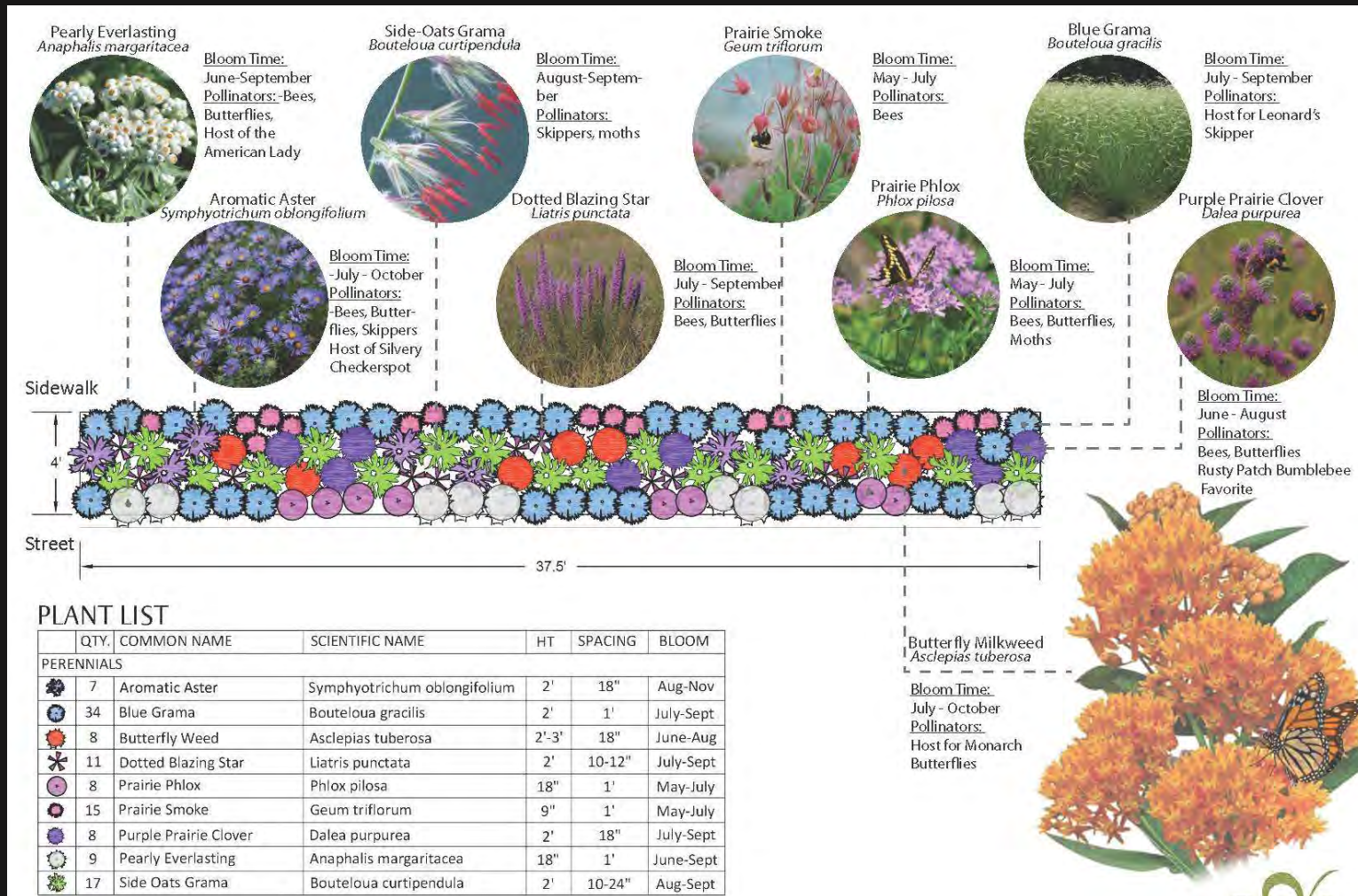


Credit: Rich Harrison

BOULEVARD PLANTINGS



BOULEVARD PLANTINGS



BLUE THUMB RESOURCES

www.bluethumb.org



Workshops & Events

Beautify your landscape while planting for clean water and pollinator habitat.

Resilient Yards workshops give participants the skills to create their own raingardens, native plantings, pollinator habitat, and more. Use our free online learning series, register for a live virtual workshop, or do both!

While registering for the Resilient Yards Online Learning Series or a live workshop, you can choose to automatically enter our **Lawns to Legumes** lottery to receive a \$350 cost share grant for creating pollinator habitat in your yard. Your yard can be the change.

Register for the FREE Resilient Yards online learning series



Fill out the form below to gain immediate access to our Resilient Yards Online Learning Series, **FREE** to all Minnesota residents. The series contains two courses, Resilient Yards and Turf Alternatives.

Both courses contain video lessons written and delivered by experts in the field and numerous do-it-yourself resources that will guide you through each step of your own planting project.

First Name *(Required)* Last Name *(Required)*

Address *(Required)*

Street Address

City State

ZIP Code

Email *(Required)*

Enter Email Confirm Email

This is the email address that will be associated with your online learning account, and where you will receive instructions to log in and access the courses.

Would you like to be occasionally notified of similar events and related news?

Yes, please add me to Metro Bloom's email list.

Register for online and in-person workshops



If you find yourself wanting to take the next step after completing these courses, we recommend that you sign-up for one of our live workshops, which you can learn more about below. All of our live workshops include 1-on-1 Q&A time with a professional landscape designer. All workshop registrants are automatically enrolled in the Resilient Yard Online Learning Series as well.

We will be gradually adding new live workshop dates to our calendar throughout the spring, so make sure to check back for updates!

Show events matching:

March 2023
Thursday March 30

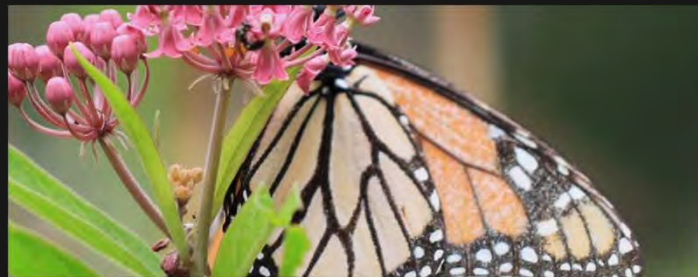
6:00 pm
Resilient Yards Workshop: St. Louis Park
Online (Webinar), MN, United States

6:00 pm
Turf Alternatives Workshop: VLAWMO
Online (Webinar), MN, United States

April 2023
Monday April 3

6:00 pm
Resilient Shorelines: RCWD
Online (Webinar), MN, United States

Tuesday April 4
6:00 pm



Resources

Explore the tabs below for free downloads on a variety of topics related to planting for clean water and pollinators. For guides on specific types of native planting projects, you can also visit our [Raingardens](#), [Shoreline Stabilization](#), [Turf Alternatives](#), and [DIY Planting Guide](#) pages.

Featured Resources



Planting for Pollinators Design Guide Native Plants Nurseries/Retailers List Monarch Upper Midwest Plant List Rusty Patched Bumblebee List

[Plant Lists](#) [Design Templates](#) [Raingardens](#) [Shoreline Stabilization](#) [Turf Alternatives](#) [General Guides](#) [Lawns to Legumes Guides](#)

Design Templates

- [Boulevard Raingarden Shade Template](#)
- [Boulevard Raingarden Sunny Template](#)
- [Container Plantings for Shade \(Metro Blooms Design + Build\)](#)
- [Container Plantings for Sun 1 \(Metro Blooms Design + Build\)](#)

Find Plants:

Search ...

View as: [Gallery](#) [Table](#)

All Light Exposure

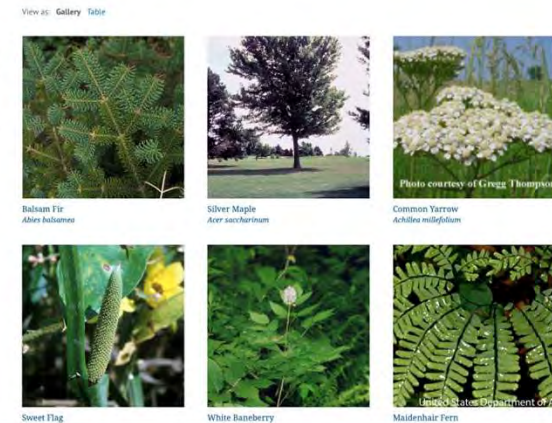
All Soil Moisture

All Plant Types

All Bloom Colors

All Bloom Months

Plant Finder



How to Plant for Pollinators & Clean Water

Steps to Plant for Pollinators

If any of these apply to you, a native plant garden may be the solution:

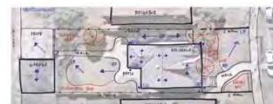
- You want to make a difference in protecting our water resources and pollinators
- You enjoy seeing pollinators like birds, bees, butterflies, and more
- You enjoy Minnesota's lakes and streams
- There are areas in your yard where grass doesn't want to grow
- There are areas in your yard that aren't used

Follow the guide below to get started on your clean water and pollinator habitat project. Anyone can use this as a resource!

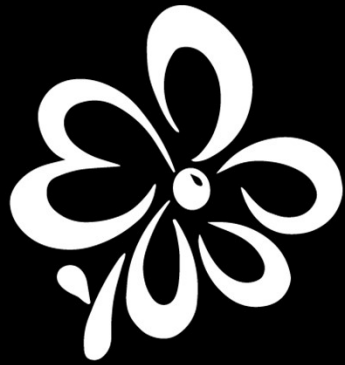
Step 1: Assess

The first and most important step is to assess your yard. What areas of your yard can be used to install a project? How large or small do you want your project to be? Notice where trees and existing landscaping are. Examine the type of soil you have. These are all a part of a site assessment.

You can print a view of your property from your county's GIS map and draw your site map over it like the image shown to the right.



Step 2: Plan



Metro Blooms

GROW. BLOOM. INSPIRE!

THANK YOU!

